

microcut

B-65 CLAMP/CUT CONTROL SYSTEM AND MICROCUT PLUS WS BACKGUAGE CONTROL SYSTEM



B-65 CLAMP/CUT Control System



The C&P Microsystems B65 paper cutter control system allows any flywheel cyclical paper cutting machine to be brought to modern standards. The system is a complete clamp/cut control system that can replace an existing control system and is available as an OEM package for new machines. The system does require the installation of a microcut PLUS WS backgauge control system for the operator interface.

Features of the B65 control system include:

- Full machine control with dual channel internal control
 - Two independent CPU's
 - Two independent oscillator controlled fail safe channels
 - Two independent force guided relays to control primary drive power
 - Cross monitoring
 - Full internal safety checking
- Full status and diagnostics shown in microcut display
- Voltage options for clamp and cut solenoids
- Independent voltage option for safety pin power
- Auto cut option
- Clamp only option
- Cut optimize operation for machines with independent locking valve.
- Programmable clamp pressure
- Auto stop down option for knife adjustment
- Multiple safety curtain options

Additional inputs for:

- Covers
- Shear bolt(s)
- E-stop
- Foot treadle
- Air paddle
- Autotrim style table full in
- Oil filter
- Open inputs for future expansion

Additional output control for:

- Second air zone
- Load control
- Autotrim style table
- Air motor control

Important safety note:

The B65 system is an electronic control only and will not compensate for mechanical or hydraulic shortcomings in the machine.

B-65 Control System Components



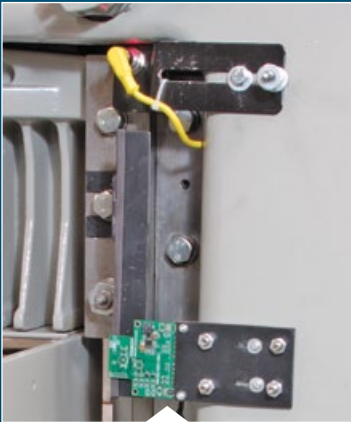
B65 Control PCB

Controls all clamping, cutting and safety pin operation. Safety and expansion CPU's for monitoring, cross verification and full machine control.



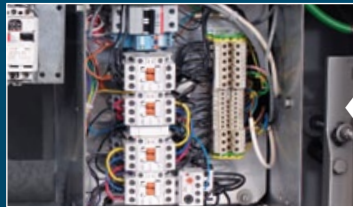
Knife position monitor

Monitors and sends knife motion and position status to the control system.



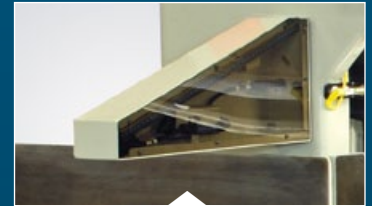
Clamp encoder assembly (Optional)

Monitors clamp motion for clamp lead (knife delay). Can interface to MIS system for paper height computations.



Power panel

Interfaces the AC power components
 Main motor
 Air motor
 Circuit breakers (H3 drive and DC power supplies)



Safety curtains








The system can interface with a multiple of curtain options.

Sensors that need to be provided or the sensors from the original machine that will be used:
 Cut buttons, safety pin full in and full out, clamp treadle up, hand wheel sensor and shear bolt sensor(s)

Microcut PLUS WS Backgauge Control System

The C&P Microsystems microcut® PLUS WS back gauge control system is designed to automate backgauge movement on any paper cutter regardless of brand or size. The system includes a state of the art drive control system with an intuitive, easy to use color touch screen operator interface integrating CIP3/4 compatibility that can replace existing control systems and is also available as an OEM package for new machines.

microcut PLUS WS Components

	Standard display Retrofit box	
	H3 Drive unit for machine control interface and drive	Flat panel display with mounting box for built in look.
	Shaft encoder for position information	
	Sensors for clamp, clamp shoe, position and cut if required.	

System includes cable set for wiring and mechanical hardware kit for installation.